

# **EDIT**

## **Board of Directors – Second Meeting**

**29th June 2006**

**Muséum National d'Histoire Naturelle - Paris – France**

# **ANNEXES**

# Table of contents

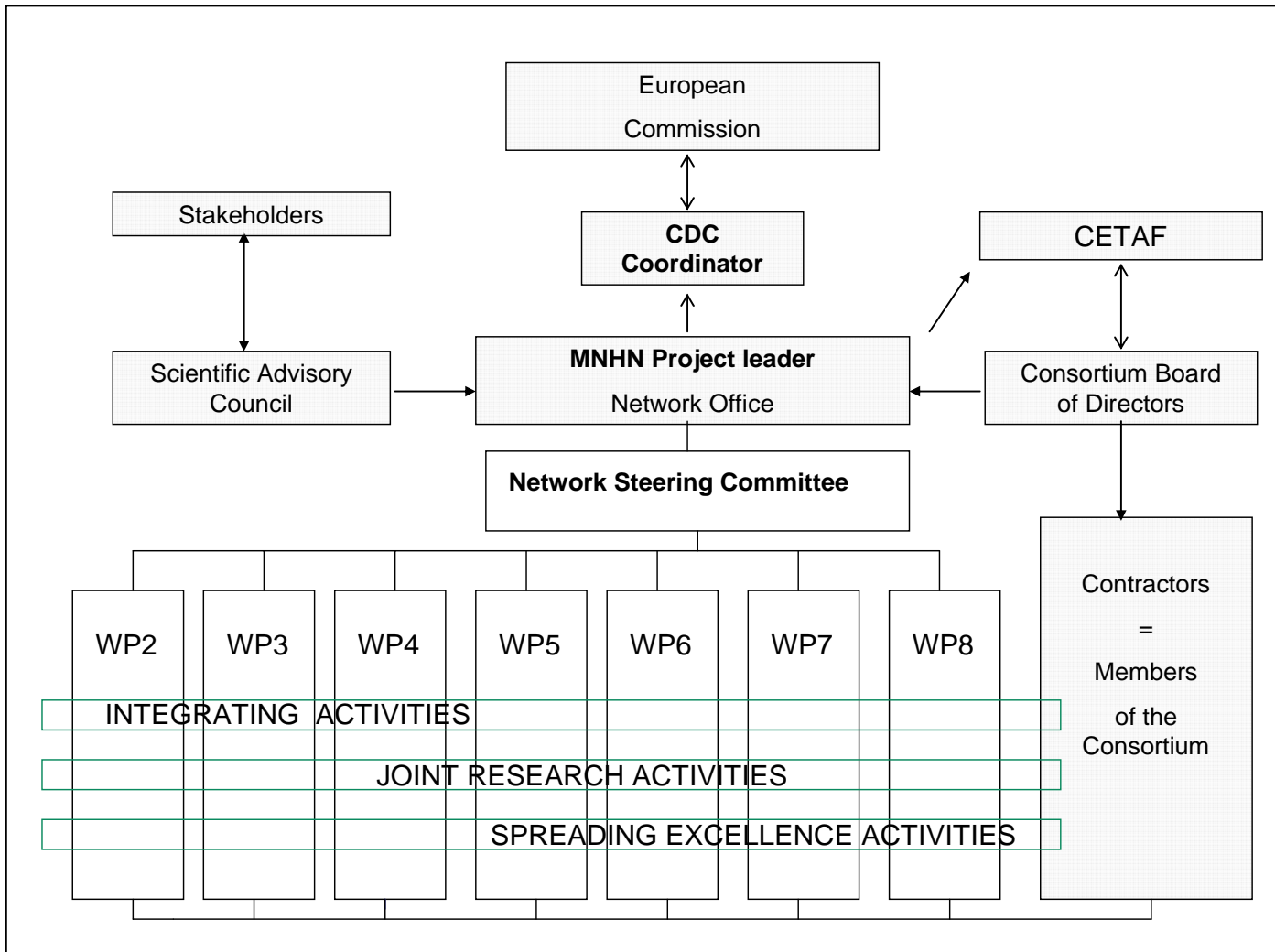
BOD (Simon Tillier).....	slide 3
BOD (Tiller/Los).....	slide 9
WP7 (Hauser/Riede).....	slide 27

# EDIT

European  
Distributed  
Institute of  
Taxonomy

## Board of Directors Meeting

Simon Tillier



# SAC 25/06/06

<b>MEN</b>		<b>WOMEN</b>	
<b>Baas</b>	?	<b>Bremer / Stockholm Bot</b>	<b>Y</b>
<b>Edwards / GBIF</b>	<b>Y</b>	<b>Mac Glade / EEA cf Richard</b>	<b>N</b>
<b>Heip / MARBEF</b>	<b>Y</b>	<b>Lane cf Edwards</b>	<b>N</b>
<b>Minelli / Univ Padua</b>	<b>Y</b>	<b>Olsen / Univ Groningen</b>	<b>Y</b>
<b>Smith / Bionet Int</b>	<b>Y</b>	<b>Martin / IUCN</b>	<b>?</b>
<b>Godfray / Imperial College</b>	<b>Y</b>	<b>Van den Hove / Univ Barcelona</b>	<b>Y</b>
<b>Parr / Alter-net</b>	<b>Y</b>	<b>Larigauderie / Diversitas</b>	<b>Y</b>
<b>Wägele / Mus Bonn</b>	<b>Y</b>	<b>Fautin / OBIS – Univ Kansas</b>	<b>Y</b>
<b>Hoffschir / MESR</b>	<b>Y</b>	<b>Vincx / Univ Gent</b>	<b>?</b>
<b>Ausubel / Sloan Foundation</b>	<b>Y</b>	<b>Richard / EEA – ETC Biodiv</b>	<b>Y</b>

**Budget repartition for the WPs for the first 18 months of the network (K Euros)**

	<b>EC Endowment</b>
<b>WP1</b>	668 124,80
<b>WP2</b>	170 280,00
<b>WP3</b>	356 880,00
<b>WP4</b>	160 280,40
<b>WP5</b>	840 880,20
<b>WP6</b>	414 273,24
<b>WP7</b>	435 480,00
<b>WP8</b>	360 000,00
<b>TOTAL</b>	<b>3 406 198,64</b>

## Budget repartition for the first 18 months of the network (K Euros)

	Partners	EC Endowment
1	CDC	122,5
2	MNHN	422,4
3	UKBH	141,1
4	CSIC - MINCN	239,9
5	UvA	123,6
6	NHN	23,4
7	NNM	56,5
8	CBS	70,0
9	FUB -BGBM	482,4
10	NHML	293,9
11	RBGK	288,9
12	SMNS	199,2
13	RBINS	163,8
14	RMCA	143,3
15	NBGB	58,5

	Partners	EC Endowment
16	MIZPAN	13,9
17	IBPAN	2,0
18	HNHM	65,4
19	CUB	75,7
20	IBSAS	46,1
21	INRA	44,2
22	SMEBD	4,9
23	SP2000	14,8
24	BINRAS	3,1
25	ZINRAS	3,4
26	MO	0
27	USNM	0
<b>To be granted to Relevant Partners</b>		<b>397</b>
<b>Total</b>		<b>3 500</b>

## **Payments of the EC Contribution to the Contractors (P.33)**

The Coordinator shall receive the financial contribution made by the Commission.

- The first payment upon receipt of the advance payment from the Commission on the basis of 1/3 of the provisional repartition of the grant as described in annex I of the EC Contract;
- The second payment after validation by the Network Steering Committee of the expenditure reports.
- The third payment upon receipt of last payment of Tranche 1 (“retention rate”) from the Commission, after receipt and validation by the Network Steering Committee, through Workpackage Leaders, of the first year Deliverables and Reports for the Commission and following the Commission’s approval of such Deliverables and Reports, after validation by the Network Steering Committee of the expenditure reports, and in accordance with the budget approved by the Board of Directors for the second reporting period.
- From the second reporting period on, payments will be made alternatively upon approval of and in accordance with the forthcoming budget by the Board of Directors (beginning of the reporting period), and after validation by the Network Steering Committee of the expenditure reports (mid-term of each reporting period).

# EDIT

● ● ● European  
● ● Distributed  
● ● Institute of  
● ● Taxonomy

## Moving the taxonomic enterprise to a European Distributed Institute of Taxonomy

Simon Tillier  
Wouter Los

# Why did the European Commission publish the call?

There is apparently a problem

From the text of the call (how others see us):

- Reduce the fragmentation in European taxonomic research
- Coordinate European efforts
- Advance taxonomic knowledge (with new technologies)
- Educate

# We are facing new challenges

- More often research and other activities / contracts are at a large scale.
- New technologies require cooperative, pro-active and fast action.  
(example: DNA-barcodes in micro-arrays).
- We are increasingly being expected (or invited) to enter into new large developments.  
(example: GeoNetCast)
- The competition from other disciplines is tough, and taxonomists have to join forces.

# Can we face the new challenges?

- Can we prioritize together?
- Can we agree on a joint agenda?
- Can we mobilize 100 - 1000 persons for a task?
- Can we act together in a transparent and accountable way?
- Can we manage this?

# (Im)possibilities for change

Our institutes are independent organisations, with different mandates and financial dependencies. How to integrate; the virtual organisation model?

We need innovative ways to collaborate, and to share and/or redistribute decision power and control.

We also need new tools (WP 5, 6 and 7), and to test the new ways to collaborate and share power.

# An example of why to change

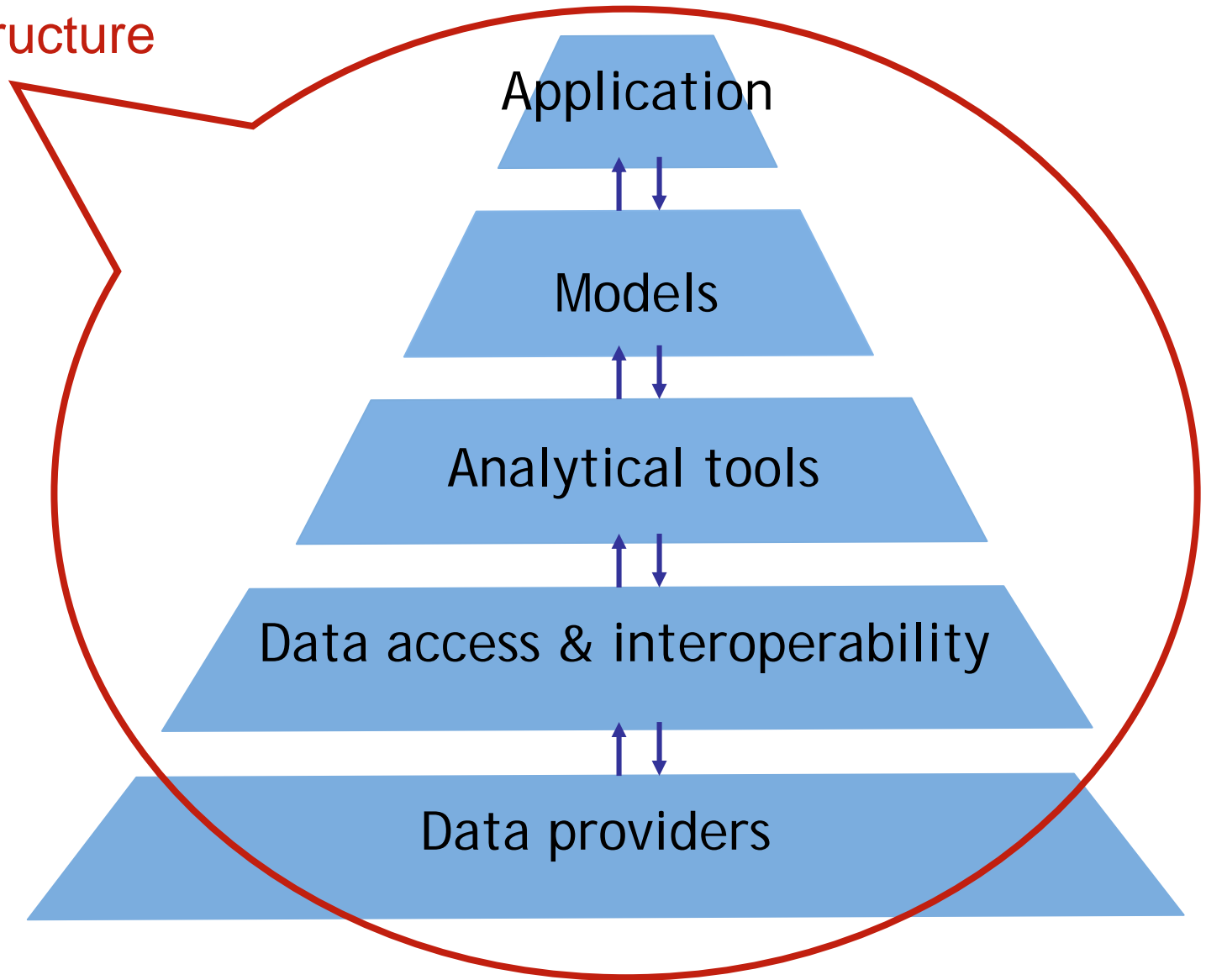
## ● **LIFEWATCH**

*e-Science and Technology Infrastructure  
for biodiversity data and observatories*

# Objectives of Life *Watch*

- To provide a state-of-the-art facility for biodiversity research spanning all levels of biological organization from molecular genetics to whole ecosystem studies, and across scales ranging from seconds to geological time and from microns to kilometers;
- To interconnect the distributed components into one installation so that the biological research community can access information remotely;
- To facilitate predictive modeling of biological systems via data sharing and synthesis efforts by users of the research facilities;
- Support users to understand biodiversity change in relation to past, current and future pressures.

The LIFE WATCH  
infrastructure



# Features

- In situ and ex situ data generation.
- Integration of data and of analytical/modeling capabilities.
- Addressing long term and deep history trends,
  - short term fluctuations and spontaneous events,
  - on different spatial scales,
  - from molecular to organism and ecosystem level.
- New opportunities for scientific progress.
- Services to society.
- Distributed data storage, distributed and high performance computing.
- Multi-user access (physically and virtual).
- Service Center
  - advertisement, organisation of access, guidance,
  - training courses,
  - fellowship programme.

# Support by the scientific community at European level

Supporting scientific networks (and their stakeholder institutes, of which many are national research infrastructures), representing a total of over 1500 biodiversity researchers.

- MARBEF
- ALTER-Net
- EDIT
- CETAF
- SYNTHESYS
- BioCASE
- ENBI



International strategic partners

GBIF (and its networks), GMES, GEOSS, ILTER

# Outline of the architecture

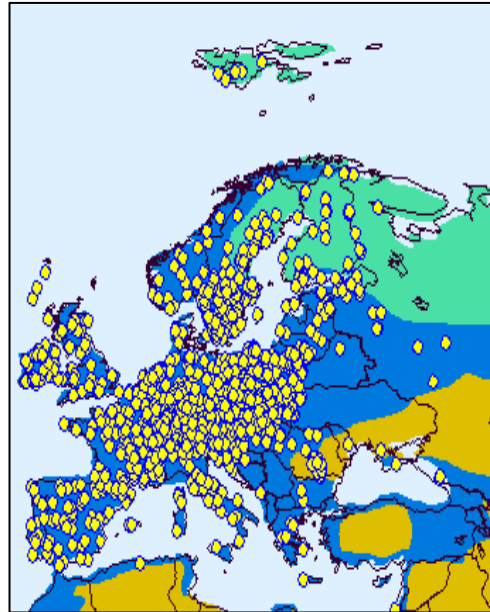
- Enabling and acceleration of data generation.
  - Data management.
  - Data integration and interoperability.
  - Analytical and modeling tools.
  - Grid workflow management and planning.
  - Portal interface with specialist platforms.
  - Service Center
- } Virtual laboratory

# Distributed data generation

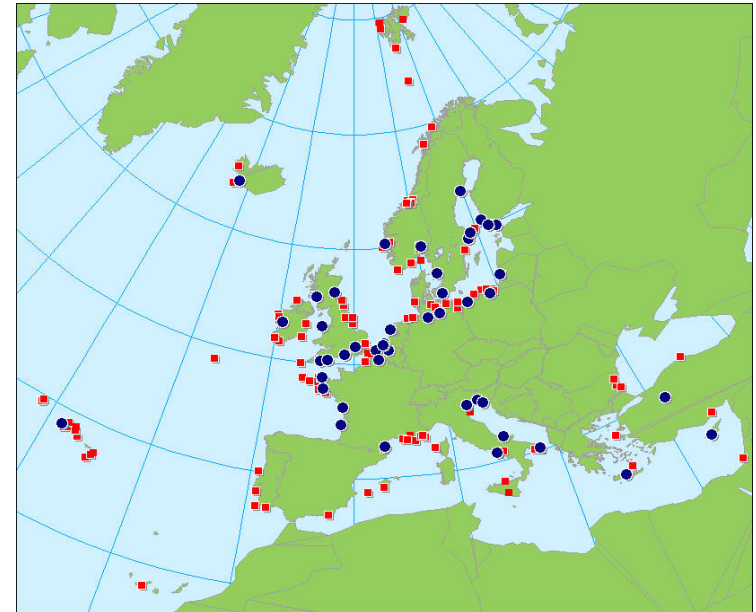
Natural science  
collections &  
observations

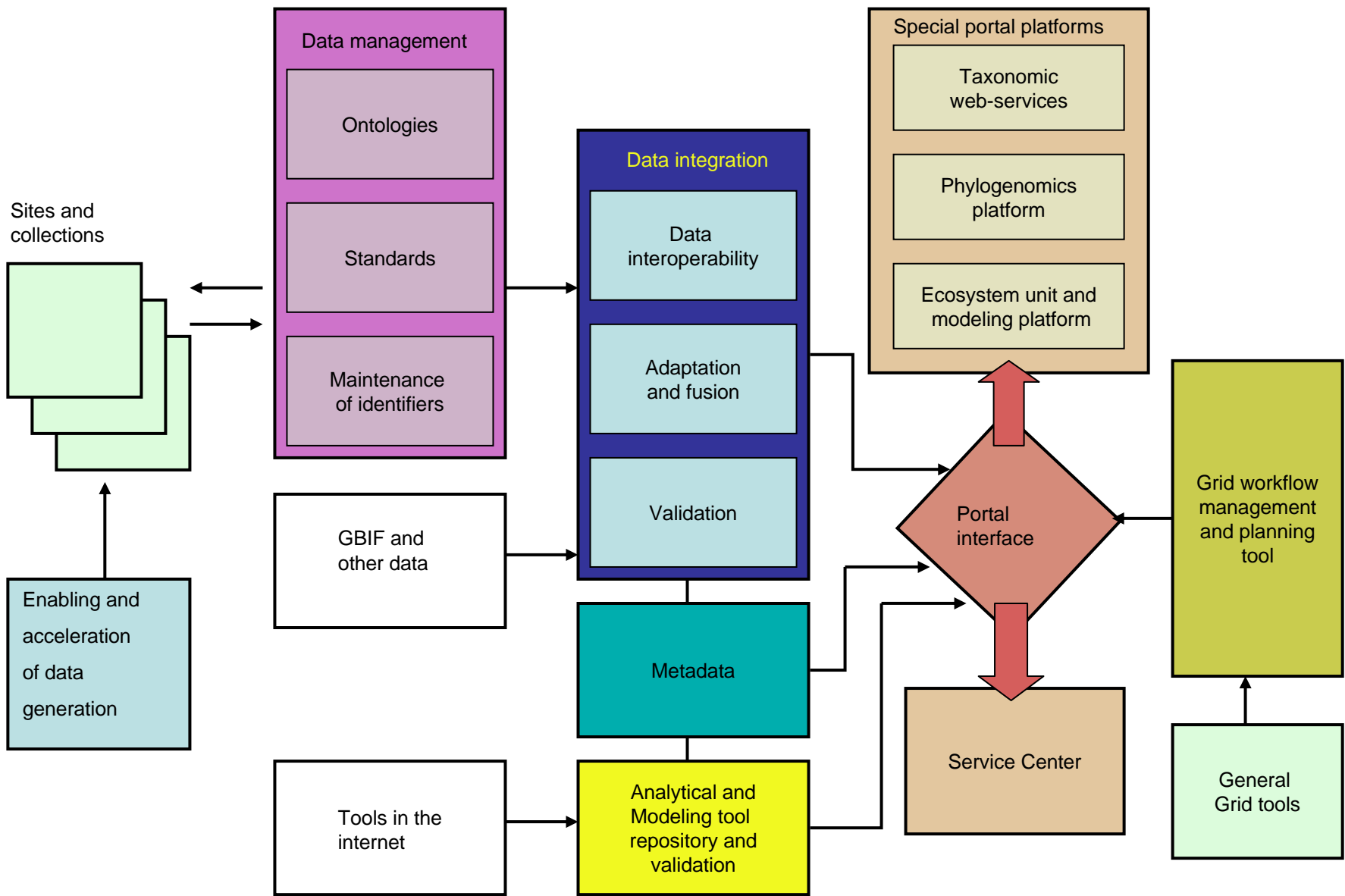


Terrestrial LTER sites



Marine reference and focal sites





**LIFE WATCH architecture**

# Multi-users facility and open access

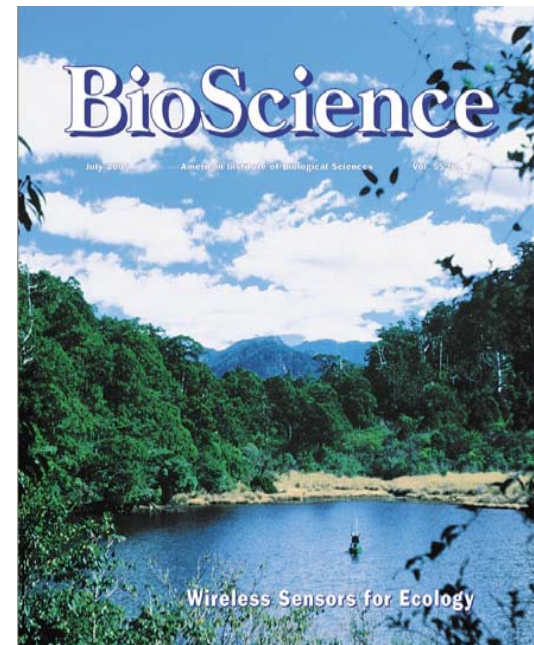
- LIFE *WATCH* is an open access infrastructure.
- Attention for specific user groups (e.g. researchers, EEA, developing countries).
- User groups find their way by
  - direct information retrieval or by machine-machine interactions,
  - experimenting with analytical and modeling tools
  - requesting or proposing new data sources and tools.
- Provision of training courses and eLearning techniques.
- Service Centre
  - advertising research and other use opportunities,
  - processing proposals and requests,
  - organisation of training and guidance.
- Fellowship programme for young researchers with original plans.

# Time is running

Networks of Excellence are for longer than only 5 years.  
But LIFE *WATCH* is going fast, and EDIT must be leading.

EDIT's priority is to prepare the blueprint for a new generation infrastructure with an impact going beyond the immediate objectives of EDIT

Other technological developments are speeding up, and the EDIT infrastructures must take the lead to benefit from these.



# Role of the Board of Directors

- Consider the results and proposals from EDIT's workpackages on their effectiveness.
- Bring your own suggestions and plans on the table.
- Promote implementation in your institute

You are the key to succes!

# Your feedback please

- Do you support the high ambitions of EDIT?
- Are you comfortable with the key role of the Board of Directors?
- How to disseminate views and results outside the EDIT partnership? The relation to CETAF.
- Will you put the implementation of EDIT's objectives high on the agenda of your institute?



Thank you

# EDIT

European  
Distributed  
Institute of  
Taxonomy

## WP7

# APPLYING TAXONOMY TO CONSERVATION

State Museum of Natural History,  
Stuttgart (SMNS)  
Christoph Häuser & Klaus Riede

# The Challenge

No **complete** biodiversity **inventory** available yet for *any* **protected area** in the **World !!**

Species  
details:

The screenshot shows a web browser window with the URL <http://www.unep-wcmc.org/indicators/details.cfm?site=0540&rd=not>. The page content includes:

- Anmerkungen**: Information Sources (Latest Info: CDDA European Update, August 2004).
- Map**: Legend showing Białowieża (red square) and Other Protected Areas in Poland (green square). A map of Poland is shown to the right.
- Udvardy's Realms, provinces and biomes details**:
 

Realm	Palaeartic (2)	Province	Continental (10)	Biome	Temperate broad-leaf forests (60)
-------	----------------	----------	------------------	-------	-----------------------------------
- Historical details**:
 

Date	1 January 1940	
Designation	National Park	IUCN Category
Event	Designated	Area
Management	Management: Public - National Administration: Public - National Ownership: Unknown	
Source	Latest Info: CDDA European Update, August 2004	
- Species details** (highlighted with a red box):
 

No details are currently available for any species. If you know of a species which exists in this protected area please complete the comment form.
- Related site details**:
 

Adjacent	<a href="#">Belovezhskaya Pushcha / Bialowieza Forest</a> (World Heritage Convention)
----------	---

*„No details are currently available for any species. If you know of a species which exists in this protected area please complete the comment form.“*

# The Background

## ATBIs - All Taxa Biodiversity Inventories

- ...attempting to record and document the entire biodiversity occurring at a specific site or area.
- Where ATBIs have been undertaken at some depth, they have considerably increased the knowledge of the biodiversity of the area, frequently including the discovery of
- dozens of new species or
- hundreds of species previously unknown to the region



Example: ATBI in  
Great Smoky Mountains National Park  
<http://www.dlia.org/atbi/index.shtml>

# Objectives

Strengthening the input of taxonomic expertise in Europe for biodiversity conservation programmes and policies, especially for inventories, assessments, and monitoring of biodiversity.

Integrating user needs for taxonomic expertise from the conservation management side with research agendas for biosystematics and biogeography from leading European centres of excellence.

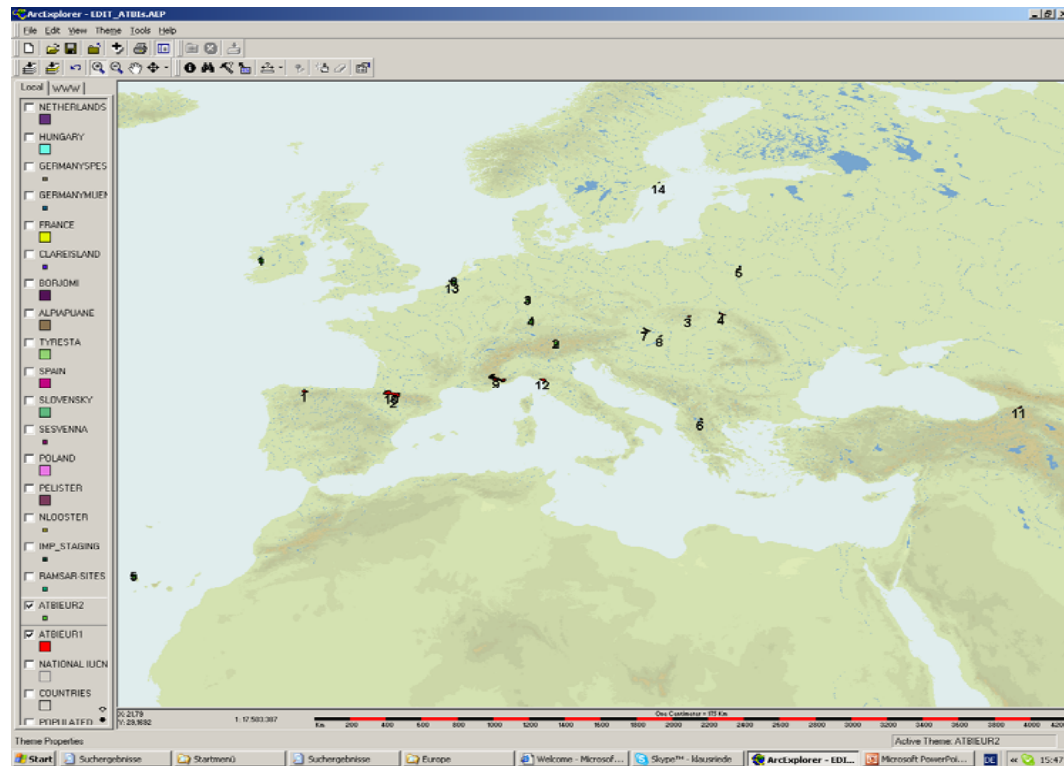
Further development and promotion of standards, techniques and methodologies for state of the art and cost efficient biodiversity assessments including a new approach for an

"All Taxa Biodiversity Inventory & Monitoring" (ATBI+M) programme.

Establish a *European expert task force* for undertaking and supporting biodiversity inventories, assessments, and monitoring activities.

# European Pilot sites

Call for proposals for ATBI+M pilot site from EDIT partners:  
(22) 16 proposals for Europe (*and appr. 25 for Overseas sites*)



# Establishing Pilot Sites: Workshop

Proposed sites and criteria were discussed during a workshop in Stuttgart.



- 40 participants from 14 countries.
- Results were published on CD, distributed among all EDIT Team Leaders
- **Feedback by questionnaires** (Ranking: 6-1)
- Database established for ranking, comments and taxonomic expertise

# Selection of Pilot Sites: Criteria

Relevance for conservation

Available information on fauna & flora

state of the art of inventories, on-going monitoring

Ecosystem

representative of a region, heterogeneous,  
threatened habitats and species, pristine

Logistics and Feasibility

Accessibility

Infrastructure (field station, accommodation, transport)

Support through counterparts and local hosts, including staff

Site administration interested to host ATBI (for long term)

Interest to seek additional funding for ATBI

Available data about the non-living world: e.g., existing (GIS) data on

meteorology, soil, geology, topography

future data collection assured

Potential for other (regional) Networks

# Pilot Sites: other considerations

Based on criteria and feedback from EDIT partners, we plan to select **4 European sites** for the first phase (M1-18). Further sites can be added in the future (open, dynamic priority list).

The selection has to be **balanced geographically** (incl. Eastern Europe) and **taxonomically**, reflecting interests and capacities of EDIT partners.

Some sites are already running **complementary** activities, and EDIT might bestow a label, without investing much resources. Other sites will not have any ATBI activity unless EDIT will take charge.

Several sites have considerable potential for **PR** and **outreach** activities.

# Pilot Sites: complementarity/outreach

Additional criteria:  
complementary  
inventory efforts  
and outreach

SummevonPoints	Sitename	Siteshort	Outreach	Complement
6	Tyresta National Park	TN	YES	YES
29	Spessart	SP	YES	YES
21	Caldera de Taburiente	CT	NO	YES
4	Outer Delta Sea Reserve	OD	YES	YES
9	NP Oosterschelde	OO	YES	YES
12	Münsinger Hart	MH	YES	YES
12	Clare Island	CI	YES	YES
28	Danube floodplain (Szigetköz)	SZ	NO	YES
34	Bialowieza National Park	BF	YES	YES
29	El Ventorillo	EV	YES	YES
9	Downe House	DO	YES	YES
60	Monte Perdido (see France)	MP	NO	NO
13	Bieszczady	BM	NO	NO
74	Borjomi-Kharagauli National Park	BK	NO	NO
70	Mercantour National Park	ME	YES	NO
10	Vértes Mountain	VM	NO	NO
78	Pelister-Presper area, Ochrid-Lake	OP	NO	NO
41	Sesvenna Area	SE	NO	NO
20	Somiedo	SO	NO	NO
43	Gemer Area: Slovensky KRas NP	SL	NO	NO

# Proposed European pilot sites

**Feedback &  
rating by EDIT  
partners**

Points	Sitename	Outreach	Complement
83	Pelister-Presper area, Ochrid-Lake	NO	NO
83	Borjomi-Kharagauli National Park	NO	NO
82	Mercantour National Park	YES	NO
61	Monte Perdido (France/Spain)	NO	NO
49	Gemer Area: Slovensky Kras NP	NO	NO
41	Sesvenna Area	NO	NO
36	Bialowieza National Park	YES	YES
30	El Ventorillo	YES	YES
29	Spessart	YES	YES
29	Danube floodplain (Szigetköz)	NO	YES
21	Caldera de Taburiente	NO	YES
20	Somiedo	NO	NO
17	Bieszczady	NO	NO
13	Münsinger Hart	YES	YES
12	Clare Island	YES	YES
10	Vértes Mountain	NO	NO
13	NP Oosterschelde/Outer Delta Sea Reserve	YES	YES
9	Downe House	YES	YES
6	Tyresta National Park	YES	YES

# Proposed Pilot Sites

One per line

	Sitename	REGION	Comple	Outreach
<b>Borjomi-Kharagauli National Park</b>	<b>Pelister-Presper area, Ochrid-Lake</b>	Eastern Medit., Caucasus	<b>NO</b>	<b>NO</b>
<b>Mercantour National Park, Alpes Maritimes</b>	<b>Monte Perdido (France/Spain)</b>	Western Europe	<b>NO</b>	<b>YES/NO</b>
<b>Gemer Area: Slovensky Kras NP</b>	<b>Bialowieza National Park</b>	Eastern Europe	<b>YES</b>	<b>NO/YES</b>
<b>Spessart or Münsinger Hart</b>	<b>El Ventorillo</b>	Central Europe/Iberia	<b>YES</b>	<b>YES</b>

green: higher ratings

# Our suggestion: next steps

**Borjomi** (Georgia) or **Pelister** (Macedonia) (to be checked by preparatory visits)

**Mercantour** or **Monte Perdido** (start negotiations, request further information, preparatory visits)

**Carpathians: Gemer** or **Bialowiecza** (make contact to relevant authorities, request further information, preparatory visits)

**Spessart / Münsinger Hart** or **El Ventorillo** (request further information, esp. on potential for PR and related activities)

## EDIT participation within WP7 ATBI+M Activities

We would like to encourage the BoD to support participation by EDIT institutional staff and associates in WP7 ATBI+M activities through:

- endorsing proposed Terms of Reference (best practise) for individual participation in ATBI+M teams
- endorsing agreements (MoU) with proposed ATBI+M pilot sites
- supporting staff to engage specific tasks for operations of ATBI+M sites:
  - ATBI+M site manager / focal point
  - ATBI+M site scientific coordinator
  - ATBI+M site team leader(s) / operator(s)



Thank you

# Additional candidates

Depending on the outcome and success of negotiations with suggested priority sites, the following areas could also be considered and/or included:

[+ / +]: Clare Island (IR), Downe House (GB), Tyresta (SE)

[+ / -]: Danube floodplain (Szigetösz) (HU) + Slovakian mirror sites (SK),  
Caldera de Taburiente (ES)