



Project no. 018340

Project acronym: EDIT

Project title: Toward the European Distributed Institute of Taxonomy

Instrument: Network of Excellence

Thematic Priority: Sub-Priority 1.1.6.3: "Global Change and Ecosystems"

C7.5.5 Survey from feedback of ATBI+M participants

Due date of component: Month 38

Actual submission date: Month 45

Start date of project: 01/03/2006

Duration: 5 years

Organisation name of lead contractor for this component: Partner 12-SMNS, 30-MfN

Revision [end version]

Project co-funded by the European Commission within the Sixth Framework Programme (2002-2006)		
Dissemination Level ("X" in the relevant box)		
PU	Public	X
PP	Restricted to other programme participants (including the Commission Services)	
RE	Restricted to a group specified by the consortium (including the Commission Services)	
CO	Confidential, only for members of the consortium (including the Commission Services)	

participants, also taking the chance to provide comments/suggestions. Question 9 should rate the efficiency and celerity of the reimbursement procedure, while Question 10 was intended to judge the WP7 efforts for presenting the obtained results on the dedicated websites. Finally, Question 11 would reflect the willingness of experts to participate at ATBI+M activities in the future.

1. ATBI+M Mercantour/Alpi Marittime (France/Italy)

The questionnaire was sent to 127 participants, from which 40.1% (n = 51) returned back their evaluation. Participants from 2009 did not have to answer Questions 4 and 5, as activities during 2009 were extended beyond the focal sites to the whole are of the parks.

1.1 Results

WP7 administration (Q1)

The majority of participants rated the overall efficiency of the WP7 administration as “good” (56.9%, n = 29), while 27.5% (n = 14) and 15.7% (n = 8) considered it as “excellent” or “satisfactory”, respectively. None of the interviewees rated the WP7 administration as “insufficient” or “poor”.

Benefit from participating at ATBI+M activities (Q2)

The benefits obtained in relation to the time effort invested into participation at ATBI+M activities were considered as “good” by the majority of participants (52.9%, n = 27). It was rated as “excellent” or “satisfactory” by 11.8% (n = 6) and 29.4% (n = 15) of the participants, respectively. Three participants (5.9%) found the benefits “insufficient”.

On ground services in the parks (Q3-7)

The procedure to obtain **collecting permits** (Q3) was judged as “excellent” by almost half of the participants (Fig. 2, permits). The remaining interviewees considered it as either “good” or “satisfactory”.

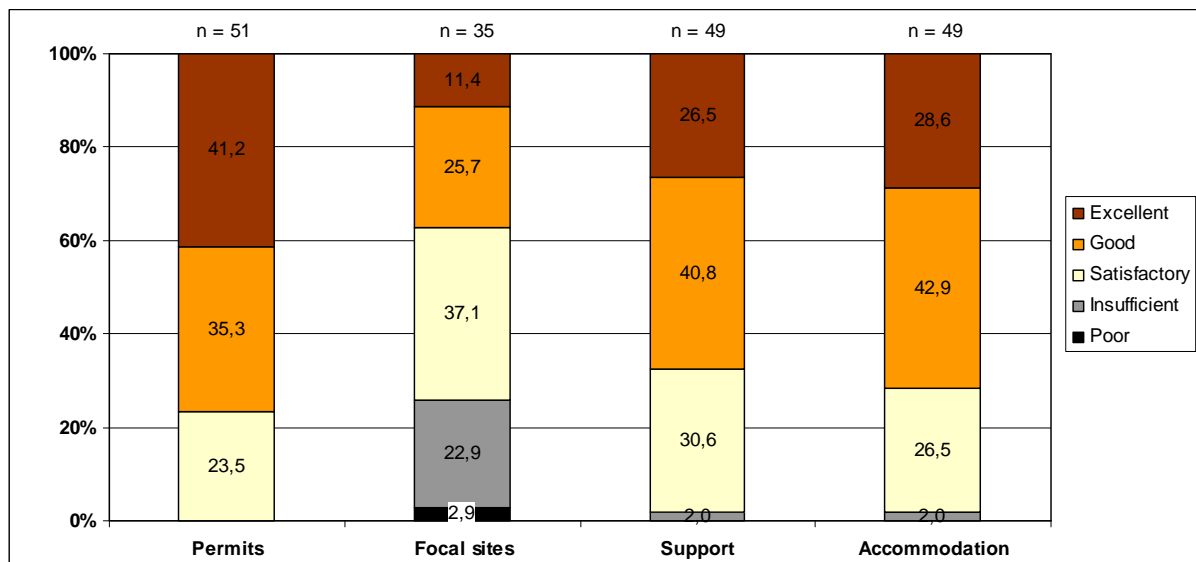


Fig. 2: Evaluation of on ground services at the ATBI+M site Mercantour/Alpi Marittime

The recommended **focal sites** (Q4) for surveying were considered as “satisfactory” by 37.1% of the interviewees (n = 13), while the same proportion of them rated the focal sites as either “good” or “excellent” (Fig. 2, focal sites). Nevertheless, the selected focal sites –not rated by all

participants- were indicated as either “insufficient” or “poor” by ca. 26% of the participants (all from 2007 and 2008), thus indicating that the decision to extend the survey area beyond the focal sites to the whole area of the parks was correct. The wish to collect beyond the focal sites (Q5) was also expressed by 81.8% (n = 27) of the participants that answer to this question. It should also be noted, that some organism groups, e.g. Tachinidae (Diptera) are only poorly represented in the focal sites.

Logistic support (Q6) by local managers was largely rated very positive. 98% of the participants judged it as either “excellent”, “good”, or “satisfactory” (Fig. 2). Only 2% (n = 1) felt it was “insufficient”. A similar trend was observed for **accommodation** (Q7) offered to participants during the field activities (Fig. 2).

Excel sheets for data delivery and online presentation of results (Q8, Q10)

The same proportion of interviewees rated the **Excel sheets** for data delivery (Q8) as either “good” or satisfactory (45.8%, n = 22, respectively). Only one participant (2.1%) considered it as “excellent”. A small proportion of the participants (6.3%, n = 3) judged the data sheet as “insufficient”, thus indicating that the continuous improvement is justified. **Online presentation** (Q10) of delivered taxonomic data and datasets was considered as “good” by almost half of the interviewees (45.8%, n = 22), while 35.4% (n = 17) and 12.5% (n = 6) of them judged it as either “satisfactory” or “excellent”, respectively. Yet, 4.2% (n = 2) and 2.1% (n = 1) of the participants rated the online presentation as either “insufficient” or “poor”.

Procedure and time needed for financial reimbursement (Q9)

As reimbursement of costs takes place in return of data delivery, participants have to run with their costs in advance. Therefore it is essential for WP7 to know, if the reimbursement procedure is perceived as fast and unbureaucratic by the participants. In this regard, procedure and time needed for financial reimbursement was judged as “excellent” by 22.9% (n = 11), “good” by 41.7% (n = 20), and as “satisfactory” by 25.0% (n = 12) of the participants. In contrast, 6.3% (n=3) and 4.2% (n = 2) considered it as either “insufficient” or “poor”, respectively.

Willingness to participate in coming years (Q11)

The ATBI+M efforts at Mercantour/Alpi Maritime have been very well received by the participants, as 84.3% (n = 43) would like to participate in coming years. Two participants (3.9%) could not say at this point whether a further participation will be possible and 11.8% (n = 6) are not willing to participate again.

2. ATBI+M Gemer Area

The questionnaire was sent to 35 participants, from which 40% (n = 14) returned back their evaluation. One questionnaire out of 14 was not filled, because of technical problems. Therefore only 13 surveys could be analysed.

2.1 Results

The over-all valuation (%) of the questions (Q1-4 and Q6-10) is found in Fig. 3. Q5 and Q11 were valuated separately because only a yes/no decision was offered. Here all interviewees (n = 13) gave a Yes-vote for both questions. Concerning the 9 “quality” questions (Fig. 3) a maximum of 117 answers were possible (9 x 13 informants), but only 109 could be interpretive, because 6.84% (n = 9) were not filled out. Three-fourths of the interviewees evaluated the EDIT ATBI+M services on average as good and excellent, none as poor and only 1.7% found the services insufficient.

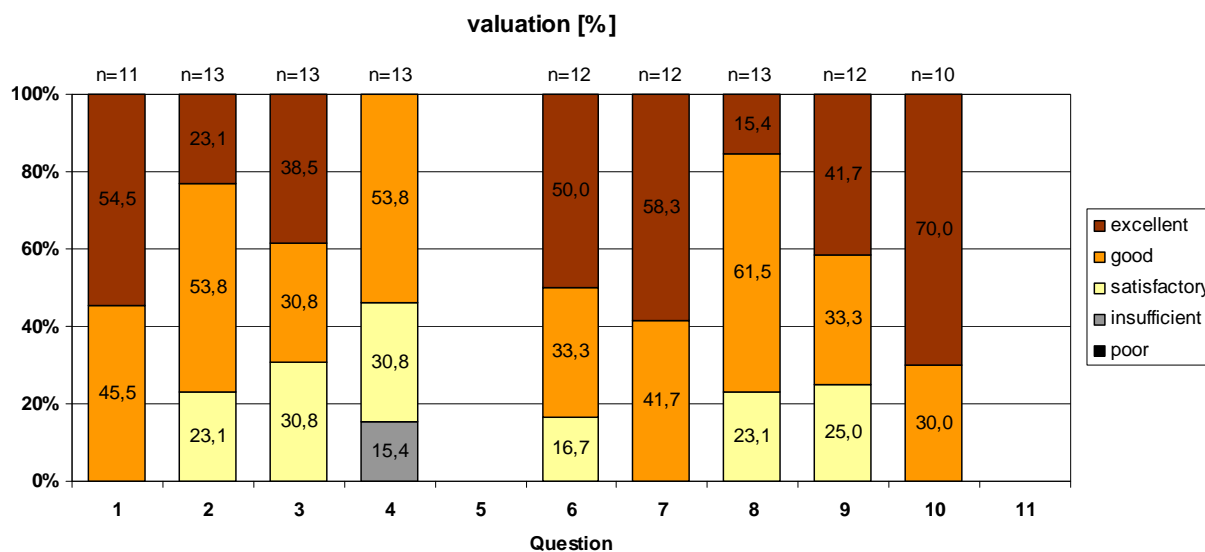


Fig. 3: Evaluation of all single questions (1-4; 6-10)

WP7 administration (Q1)

Also all participants from the ATBI+M pilot site “Gemera area” rated the overall efficiency of the WP7 administration (Fig. 3) very positive, either as “excellent” (54.5%, n = 6) or as “good” (45.5%, n = 5).

Benefit from participating at ATBI+M activities (Q2)

The benefits obtained in relation to the time effort invested into participation at ATBI+M activities were considered (Fig. 3) as “good” by the majority of participants (53.8%, n = 7). It was rated as “excellent” or “satisfactory” by 23.1% (n = 3) and 23.1% (n = 3) of the participants, respectively.

On ground services in the parks (Q3-7)

The procedure to obtain **collecting permits** (Q3) was judged as “good” or “excellent” by more than two-thirds of the participants (Fig. 4, permits). The remaining interviewees considered it as “satisfactory”. The recommended **focal sites** (Q4) for surveying were considered as “good” by 53.8% (n = 7) of the interviewees (Fig. 4, focal sites), but two experts working on Macrofungi and Staphylinidae found the selected focal sites “insufficient”. Nevertheless, all participants (100%, n = 13) would prefer to survey also beyond the focal sites (Q5). **Logistic support** (Q6) by local managers was rated very positive (Fig. 4, support). Half of the participants judged it as “excellent”, the other as “good”, or “satisfactory” (Fig. 4, support). The **accommodation** (Q7) offered to participants during the field activities, was valued by most participants as excellent (Fig. 4, accommodation).

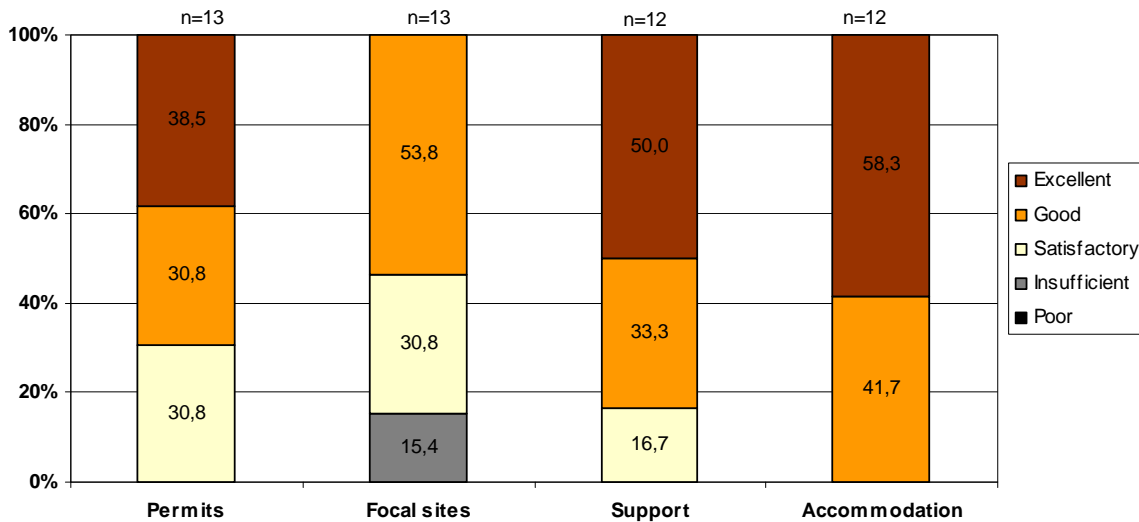


Fig. 4: Evaluation of on ground services at the ATBI+M site Gemer Area

Excel sheets for data delivery and online presentation of results (Q8, Q10)

The majority evaluated the provided **Excel sheets** for data delivery (Q8) as “excellent” (15.4%, n = 2) or “good” (61.5%, n = 8), but 23.1% of the participants found them only “satisfactory”. It should be indicated that the data sheets are under continuous improvement by WP7. The **online presentation** (Q10) of the data was valued by most participants as excellent (70%).

Procedure and time needed for financial reimbursement (Q9)

Procedure and time needed for financial reimbursement was judged as “excellent” by 41.7% (n = 5), “good” by 33.3% (n = 4), and as “satisfactory” by 25.0% (n = 3) of the participants. No participant considered it as either “insufficient” or “poor”, respectively.

Willingness to participate in coming years (Q11)

The ATBI+M efforts at Gemer Area have been very well received by the participants, all (100%, n = 13) would like to participate in coming years. It can be judged as a very positive signal that all participants plan to visit the ATBI+M site Gemer in 2010 again.

3. Conclusions

Generally speaking, the overall administrative concept for the ATBI+M activities was valued very positive by the participants. Although the evaluation of the results was based on answers of 65 participants from both ATBI+M pilot sites, it is unfortunate that they represent only 40% of the contacted experts. However, it is important to note that the great majority of the interviewees do consider benefiting from their participation and is willing to further participate in the coming years.

Elements that need some attention are the Excel sheets for data delivery and the online presentation of results, as a (low) proportion of the answers were rather negative. As however these two aspects are object of continuous update and improvement, it is well probable that the negative answers referred to older versions. A last aspect can not be directly influenced by the WP7 administration, namely the reimbursement of costs for participation, as the accomplishment depends on the workload of the finance departments in both SMNS and MfN. Delays that are sometimes inevitable led in these cases to few negative responses.